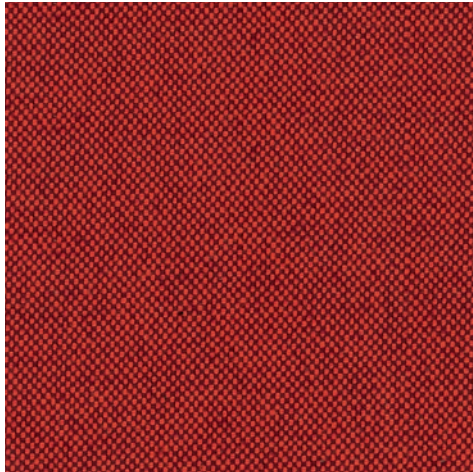


# Colors

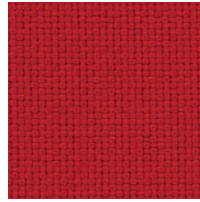
Fabric, Eco-leather, Mesh

**sem**

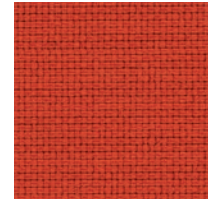
a Milani brand



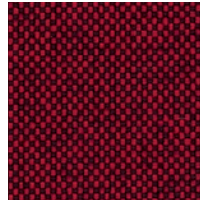
TN 9404 Tomato red



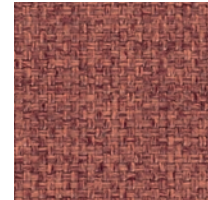
MR 6231 Super red



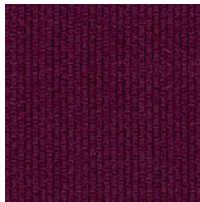
MR 6120 Red orange



TN 9416 Dark red



CN 4211 Coral red



MR 6234 Burgundy



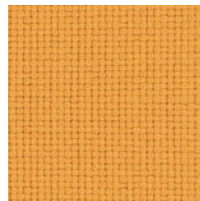
TN 9406 Plum



CN 4562 Dark brown



CN 4056 Mustard



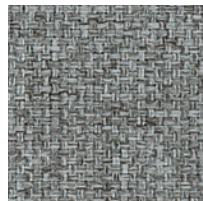
MR 6053 Honey



TN 9702 Lime



CN 4560 Clay



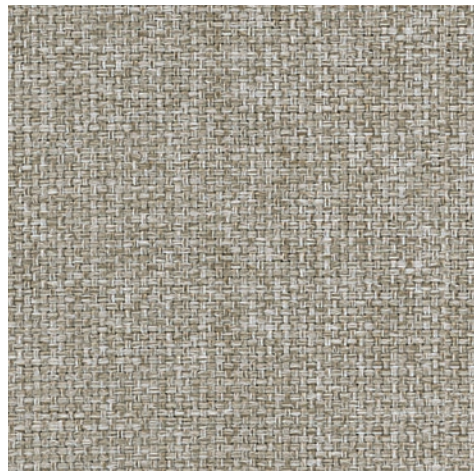
CN 4614 Stone



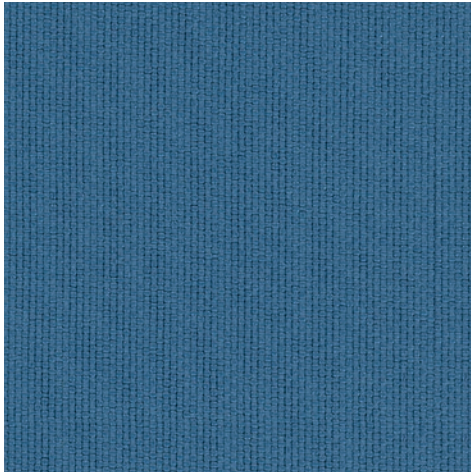
TN 9111 Warm grey



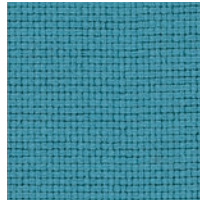
TN 9811 Chalk



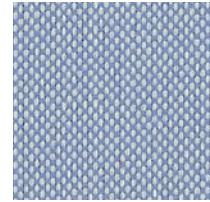
CN 4511 Sand



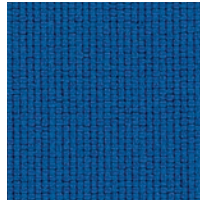
MR 6378 Misty blue



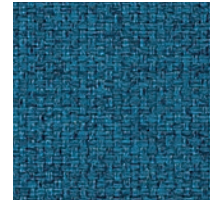
MR 6366 Turquoise



TN 9601 Mineral water



MR 6332 Indigo



CN 4313 Ocean



TN 9612 Amazon



MR 6333 Navy blue



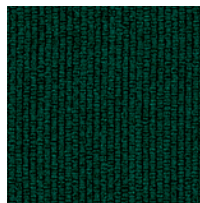
TN 9618 Lava blue



CN 4466 Mint



TN 9717 Grass green



MR 6496 Forest green



CN 4462 Moss green



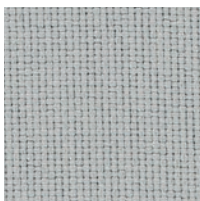
TN 9801 Concrete



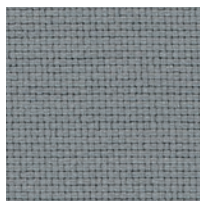
TN 9808 Black pepper



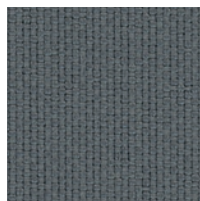
CN 4616 Charcoal



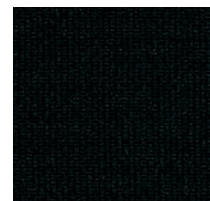
MR 6643 Light grey



MR 6629 Grey



MR 6625 Dark grey



MR 6651 Jet black

# Eco-leather SM1



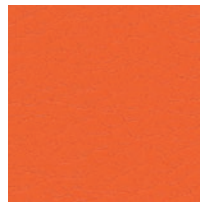
SR 0109 Cold grey



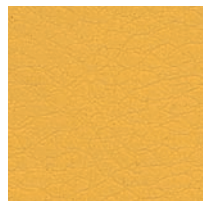
SR 0132 Royal blue



SR 0122 Dark green



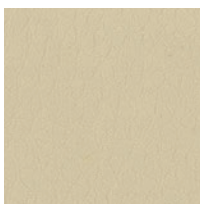
SR 0120 Orange



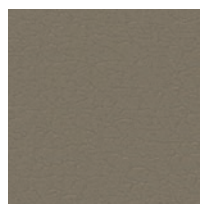
SR 0105 Yellow



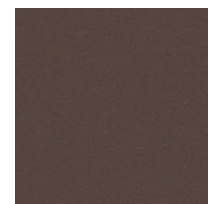
SR 0128 Red



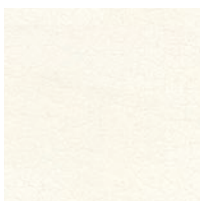
SR 0102 Cream



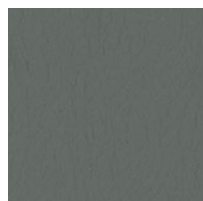
SR 0111 Beige



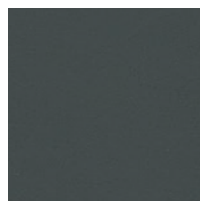
SR 0119 Brown



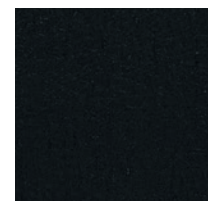
SR 0101 White



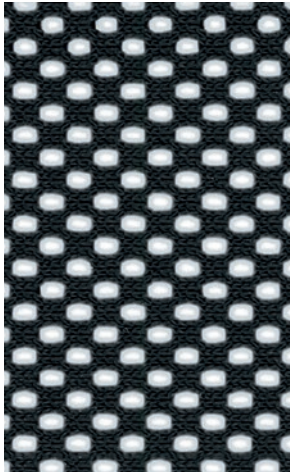
SR 0117 Quartz grey



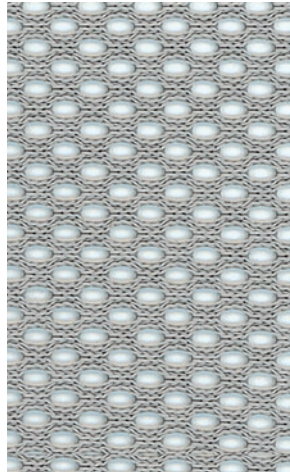
SR 0125 Anthracite



SR 0133 Black



RV 0651i Black



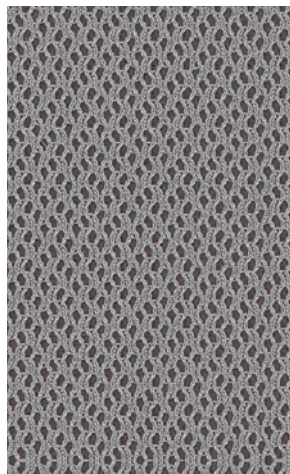
RV 0601 Grey



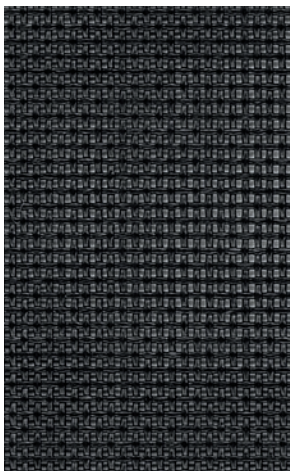
RV 0999 White



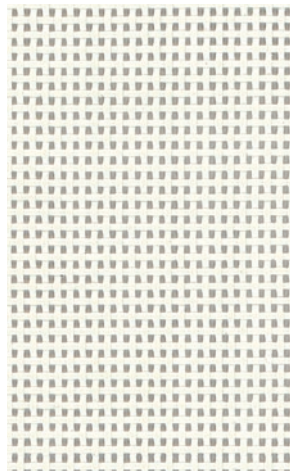
TT 0001i Black



TT 0002i Grey



RT 0015 Black



RT 0014 White

**RVi**  
Available only in black color

**TT**  
Available only for mod. *Athene*

**RT**  
Available only for mod. *Spin*

## Tessuto/Fabric/Tissu

TN SM1

Tessuto ignifugo classe 1/Fire retardant fabric/Tissu ignifuge M1  
Tessuto riciclabile/Recyclable fabric/Tissu recyclable



### Composizione/Composition/Composition

100% Poliestere Trevira CS/Polyester Trevira CS/  
Polyester Trevira CS

### Peso/Weight/Poids

260 gr/m<sup>2</sup>

### Solidità alla luce/Light fastness/Résistance à la lumière

6 (UNI EN ISO 105 B02)

### Resistenza allo sfregamento/Abrasion resistance/Résistance au frottement

> 70.000 Martindale

### Ignifugità/Fire retardancy/Réaction au feu

Classe 1 (classe 1IM in combinazione con seduta con gomma ignifuga), EN 1021-1 (cigarette), EN 1021-2 (match), M1 FR, California TB117

### Manutenzione/Maintenance/Entretien

Aspirare regolarmente/Vacuum regularly/Aspirer régulièrement



MR SM1

Tessuto ignifugo classe 1/Fire retardant fabric/Tissu ignifuge M1  
Tessuto riciclabile/Recyclable fabric/Tissu recyclable



### Composizione/Composition/Composition

100% Poliestere Trevira CS/Polyester Trevira CS/  
Polyester Trevira CS

### Peso/Weight /Poids

328 gr/m<sup>2</sup>

### Solidità alla luce/Light fastness/Résistance à la lumière

6 ± 1 (UNI EN ISO 105 B02)

### Resistenza allo sfregamento/Abrasion resistance/Résistance au frottement

> 100.000 Martindale

### Ignifugità/Fire retardancy/Réaction au feu

Classe 1 (classe 1IM in combinazione con seduta con gomma ignifuga), EN 1021-1 (cigarette), EN 1021-2 (match), M1 FR, California TB117

### Manutenzione/Maintenance/Entretien

Aspirare regolarmente/Vacuum regularly/Aspirer régulièrement



CN SM1

Tessuto ignifugo classe 1/Fire retardant fabric/Tissu ignifuge M1  
Tessuto riciclato e riciclabile/Recycled and recyclable fabric/Tissu recycle et recyclable



### Composizione/Composition/Composition

100% Poliestere FR/Polyester FR/Polyester FR

### Peso/Weight/Poids

335 gr/m<sup>2</sup>

### Solidità alla luce/Light fastness/Résistance à la lumière

6 ± 1 (UNI EN ISO 105 B02)

### Resistenza allo sfregamento/Abrasion resistance/Résistance au frottement

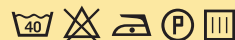
> 50.000 Martindale

### Ignifugità/Fire retardancy/Réaction au feu

Classe 1 (classe 1IM in combinazione con seduta con gomma ignifuga), EN 1021-1 (cigarette), EN 1021-2 (match), M1 FR, California TB117

### Manutenzione/Maintenance/Entretien

Aspirare regolarmente/Vacuum regularly/Aspirer régulièrement



## Eco-pelle/Eco-leather/Eco-cuir

SR SM1

Eco-pelle ignifuga classe 1/Fire retardant eco-leather/Eco-cuir ignifuge

### Composizione/Composition/Composition

87,5 % PVC + 12,5 % COT

### Peso/Weight/Poids

640 gr/m<sup>2</sup>

### Solidità alla luce/Light fastness/Résistance à la lumière

6/7 (UNI EN ISO 105 B02)

### Resistenza allo sfregamento/Abrasion resistance/Résistance au frottement

> 100.000 Martindale

### Ignifugità/Fire retardancy/Réaction au feu

Classe 1 (classe 1IM in combinazione con seduta con gomma ignifuga), EN 1021-1 (cigarette), EN 1021-2 (match), M2 FR, California TB117

### Manutenzione/Maintenance/Entretien

In caso di macchie lievi utilizzare un panno umido e sapone neutro. Per macchie persistenti, utilizzare una soluzione di alcool + acqua 20% e risciacquare/Use mild soap and warm water for slight spots, in case of persistent spots use a solution of alcool + water 20% and rinse/Utiliser savon neutre et eau tiède sur les taches légères, en cas de taches persistantes utiliser une solution d'alcool + eau 20% et rincer



## Rete/Mesh/Résille

### RV SM1

Rete/Mesh/Résille

Tessuto riciclabile/Recyclable fabric/Tissu recyclable



#### Composizione/Composition/Composition

##### Peso/Weight/Poids

##### Solidità alla luce/Light fastness/Résistance à la lumière

##### Resistenza allo sfregamento/Abrasion resistance/Résistance au frottement

##### Ignifugità/Fire retardancy/Réaction au feu

100% Poliestere/Polyester/Polyester

353 gr/m<sup>2</sup>

5± 1 (UNI EN ISO 105 B02)

> 100.000 Martindale

Classe 1 per il colore nero (classe 1IM in combinazione con seduta con gomma ignifuga)/Fire retardancy for black mesh color/Traitement non feu sur la finition noire

#### Manutenzione/Maintenance/Entretien

Aspirare regolarmente/Vacuum regularly/Aspirer régulièrement



### TT SM1

Rete a maglia/Knitted fabric/Maille

Disponibile solo per la collezione *Athene*/Available only for *Athene* collection/Disponible seulement pour le modèle *Athene*

#### Composizione/Composition/Composition

##### Peso/Weight/Poids

##### Solidità alla luce/Light fastness/Résistance à la lumière

##### Resistenza allo sfregamento/Abrasion resistance/Résistance au frottement

##### Ignifugità/Fire retardancy/Réaction au feu

100% Poliestere/Polyester/Polyester

540 gr/m<sup>2</sup>

6 (UNI EN ISO 105 B02)

> 60.000 Martindale

Classe 1 (classe 1IM in combinazione con seduta con gomma ignifuga)/Fire retardancy/Traitement non feu

#### Manutenzione/Maintenance/Entretien

Aspirare regolarmente/Vacuum regularly/Aspirer régulièrement



### RT SM1

Rete/Mesh/Résille

Disponibile solo per la collezione *Spin*/Available only for *Spin* collection/Disponible seulement pour le modèle *Spin*

#### Composizione/Composition/Composition

##### Peso/Weight/Poids

##### Solidità alla luce/Light fastness/Résistance à la lumière

##### Resistenza allo sfregamento/Abrasion resistance/Résistance au frottement

##### Ignifugità/Fire retardancy/Réaction au feu

75% PVC + 25% PES

560 gr/m<sup>2</sup>

8 (UNI EN ISO 4892-2/06)

> 100.000 Martindale

Su richiesta/On demand/Sur demande

#### Manutenzione/Maintenance/Entretien

Usare acqua e sapone neutri, non usare prodotti chimici/

Use mild soap and warm water, do not use chemical products/

Utiliser savon neutre et eau tiède, ne pas utiliser produits chimiques



