

fabric
swatch
quick look
rivestimenti
finishes
revêtements

MILANI

TS2 NE

Tessuto ignifugo Classe 1IM*
Fire retardant fabric
Tissu ignifuge M1



Composizione / Composition / Composition
100% PL FR

Peso / Weight / Poids
330 gr/m2



Resistenza alla luce / Light fastness / Résistance
à la lumière
5 (EN ISO 105 B02)

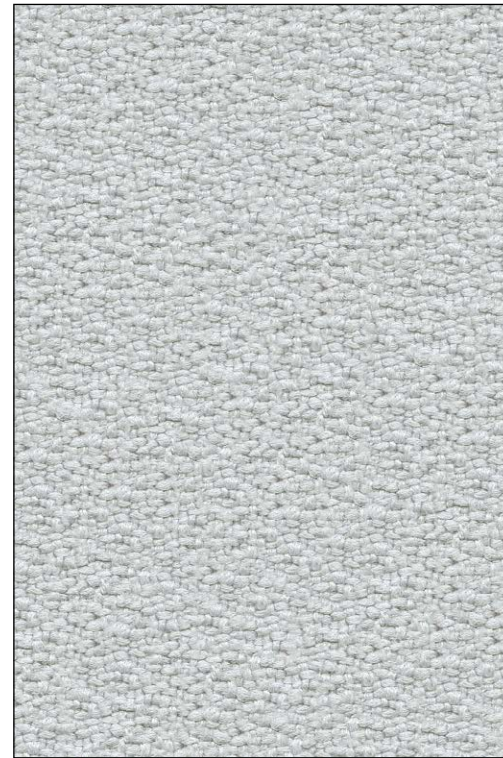


Resistenza allo sfregamento / Fastness to rubbing
/ Solidité au frottement
100.000 cycles Martindale



Ignifugità / Fire retardancy / Réaction au feu
CLASSE 1 IM*
EN 1021-1/2 cigarette & match test UK
M1 FR

Manutenzione / Maintenance / Entretien
Aspirare regolarmente / Vacuum regularly
/ Aspirer régulièrement



NE 0643



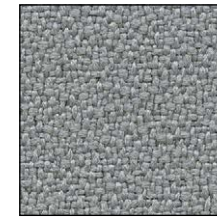
NE 0018



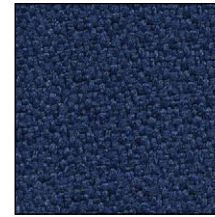
NE 0573



NE 0625



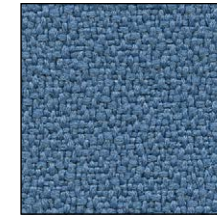
NE 0015



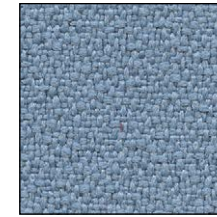
NE 0333



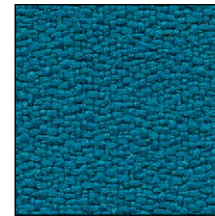
NE 0331



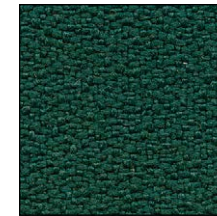
NE 0378



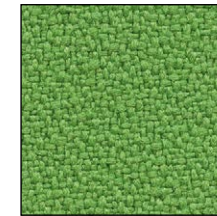
NE 0377



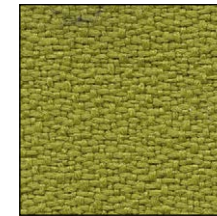
NE 0411



NE 0496



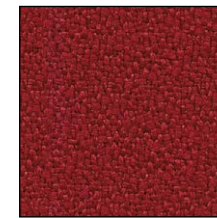
NE 0014



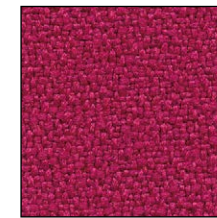
NE 0426



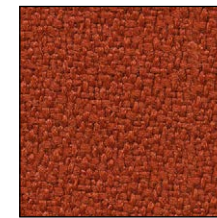
NE 0234



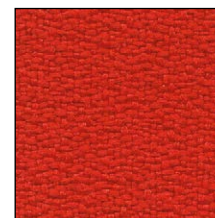
NE 0236



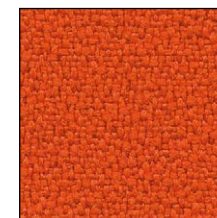
NE 0173



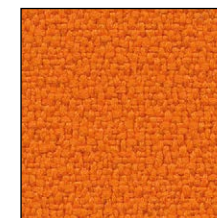
NE 0572



NE 0013



NE 0120



NE 0012



NE 0053



NE 0534



NE 0533



NE 0532

*CLASSE 1M in combinazione con gomma ignifuga. Disponibile a seconda dei modelli.

TS2 MI

Tessuto ignifugo
Fire retardant fabric
Tissu ignifuge M1



Composizione / Composition / Composition

100% PES Trevira CS

Peso / Weight / Poids

340 gr/m2



Resistenza alla luce / Light fastness / Résistance à la lumière

6 (EN ISO 105 B02)



Resistenza allo sfregamento / Fastness to rubbing / Solidité au frottement

100.000 Martindale



Ignifugità / Fire retardancy / Réaction au feu

CLASSE 1 IT

EN 1021-1/2 cigarette & match test UK

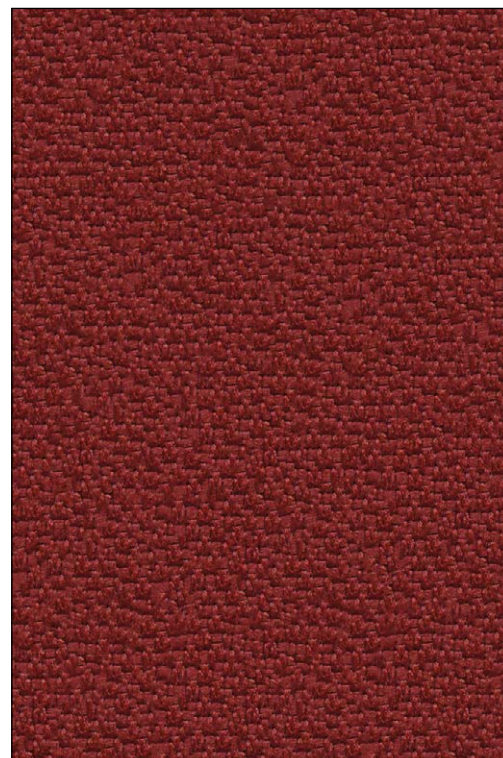
CRIB 5 (BS5852 Part II)

M1 FR

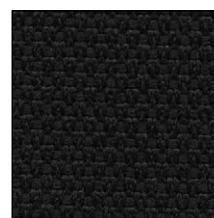
Manutenzione / Maintenance / Entretien

Aspirare regolarmente / Vacuum regularly

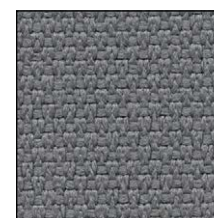
/ Aspirer régulièrement



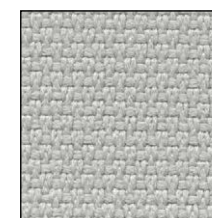
MI 4003



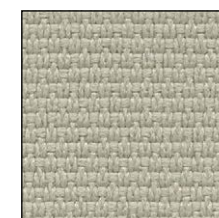
MI 8033



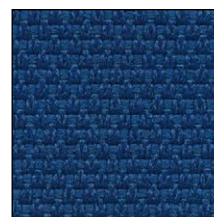
MI 8011



MI 8004



MI 1006



MI 6015



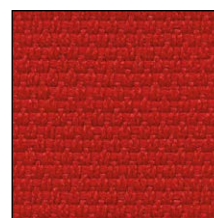
MI 6012



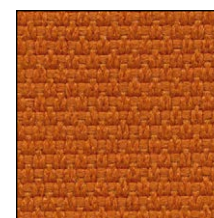
MI 7007



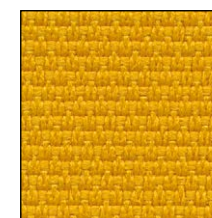
MI 7022



MI 4028



MI 4030



MI 3008

TS2
ZS

Finta pelle ignifuga Classe 1IM*
Fire retardant faux leather
Simili cuir ignifuge



Composizione / Composition / Composition

85% PVC
10% PL
5% CO

Peso / Weight / Poids
600 gr/m2



Resistenza alla luce / Light fastness / Résistance
à la lumière
5-6 (EN ISO 105 B02)

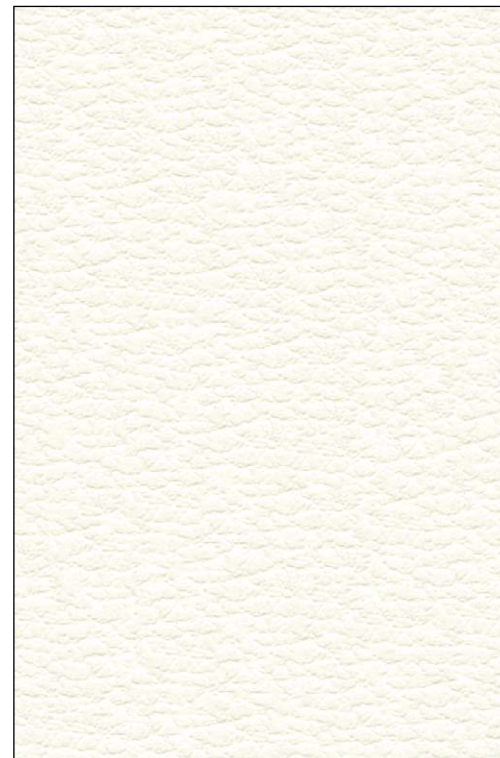


Resistenza allo sfregamento / Fastness to rubbing
/ Solidité au frottement
> 51.000 Martindale



Ignifugità / Fire retardancy / Réaction au feu
CLASSE 1 IM*
EN 1021-1/2 cigarette & match test UK

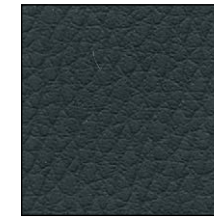
Manutenzione / Maintenance / Entretien
**Usare acqua e saponi neutri, non usare
prodotti chimici / Use mild soap and
water, do not use chemical products
/ Utiliser savon neutre et eau, ne pas
utiliser produits chimiques**



ZS 01B4



ZS 0901



ZS 02F1



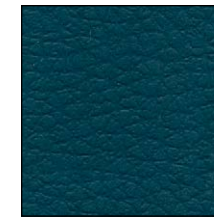
ZS 02E8



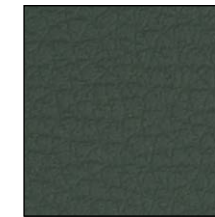
ZS 02DO



ZS 0811



ZS 07KF



ZS 07F3



ZS 07EV



ZS 06ME



ZS 06KO



ZS 06M7



ZS 06KN



ZS 05HO



ZS 05L1



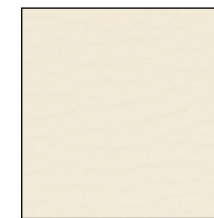
ZS 04HJ



ZS 04L1



ZS 03CV



ZS 04H0

TS3
RC

Tessuto ignifugo Classe 1
Fire retardant fabric
Tissu ignifuge M1



Composizione / Composition / Composition
100% PES Trevira CS

Peso / Weight / Poids
330 gr/m2



Resistenza alla luce / Light fastness / Résistance
à la lumière
6 (EN ISO 105 B02)



Resistenza allo sfregamento / Fastness to rubbing
/ Solidité au frottement
70.000 cycles Martindale

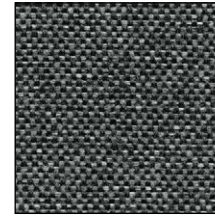


Ignifugità / Fire retardancy / Réaction au feu
CLASSE 1 IT
EN 1021-1/2 cigarette & match test UK
CRIB 5 (BS5852 Part II)
M1 FR

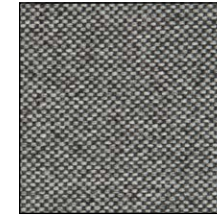
Manutenzione / Maintenance / Entretien
Aspirare regolarmente / Vacuum regularly
/ Aspirer régulièrement



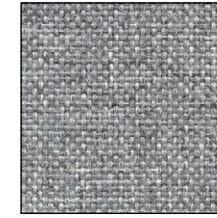
RC 1503



RC 8030



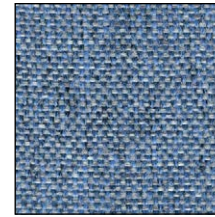
RC 8502



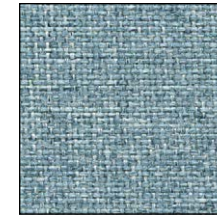
RC 8501



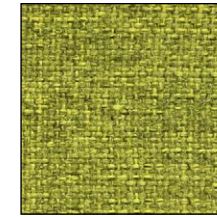
RC 1502



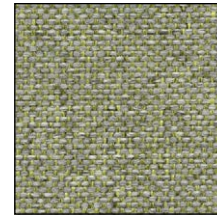
RC 6503



RC 6501



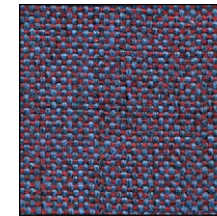
RC 7502



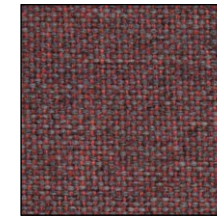
RC 7504



RC 6508



RC 5501



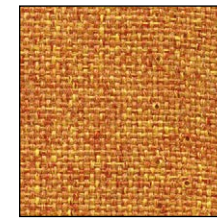
RC 4502



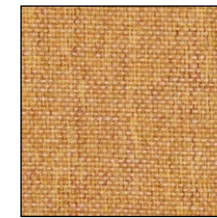
RC 4504



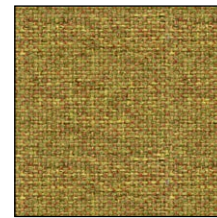
RC 5504



RC 3503



RC 3504



RC 3508



RC 1501

TS3
ML

Tessuto ignifugo
Fire retardant fabric
Tissu ignifuge



Composizione / Composition / Composition

70% Lana / Wool / Laine
30% Flax

Peso / Weight / Poids

435 gr/m2



Resistenza alla luce / Light fastness / Résistance
à la lumière

5 (EN ISO 105 B02)



Resistenza allo sfregamento / Fastness to rubbing
/ Solidité au frottement

50.000 Martindale



Ignifugità / Fire retardancy / Réaction au feu
EN 1021-1/2 cigarette & match test UK

Manutenzione / Maintenance / Entretien

Aspirare regolarmente / Vacuum regularly
/ Aspirer régulièrement



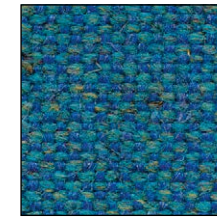
ML 0020



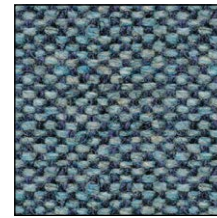
ML 0036



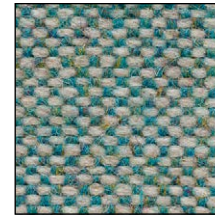
ML 0035



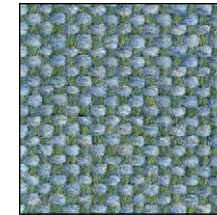
ML 0034



ML 0022



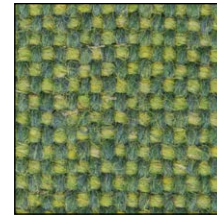
ML 0024



ML 0025



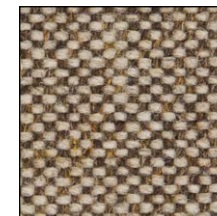
ML 0021



ML 0018



ML 0016



ML 0023



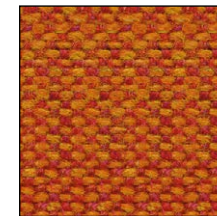
ML 0002



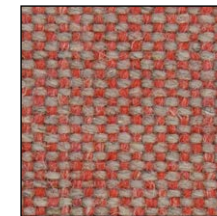
ML 0010



ML 0014



ML 0013



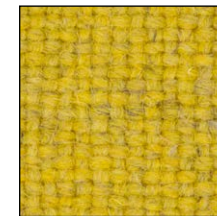
ML 0003



ML 0008



ML 0007



ML 0017

TS3
ER

Tessuto ignifugo
Fire retardant fabric
Tissu ignifuge



Composizione / Composition / Composition
100% PES

Peso / Weight / Poids
260 gr/m2



Resistenza alla luce / Light fastness / Résistance
à la lumière
AATCC-16 Class 4

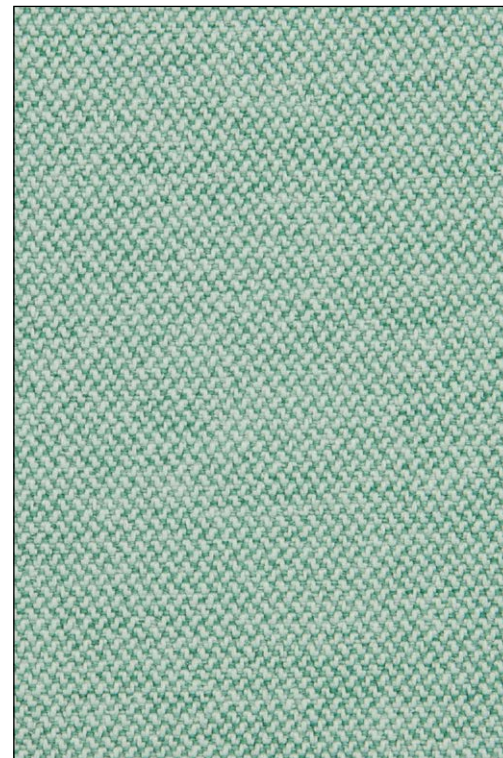


Resistenza allo sfregamento / Fastness to rubbing
/ Solidité au frottement
> 100.000 Martindale cycles



Ignifugità / Fire retardancy / Réaction au feu
EN 1021-1/2 cigarette & match test UK

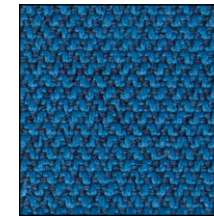
Manutenzione / Maintenance / Entretien
**Aspirare regolarmente / Vacuum regularly
/ Aspirer régulièrement**



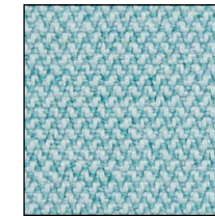
ER 0036



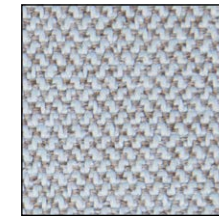
ER 0040



ER 0015



ER 0020



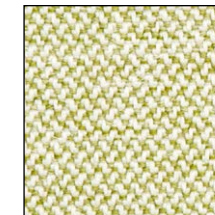
ER 0039



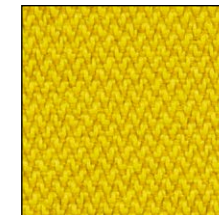
ER 0035



ER 0034



ER 0033



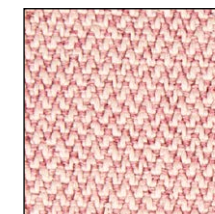
ER 0032



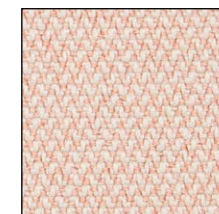
ER 0006



ER 0029



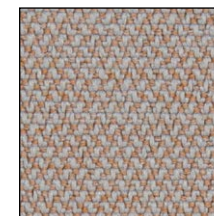
ER 0024



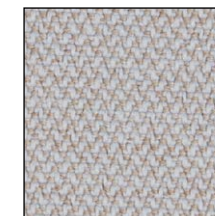
ER 0019



ER 0002



ER 0023



ER 0041

TS3
FE

Tessuto lana ignifugo
Fire retardant wool fabric
Tissu laine ignifuge



Composizione / Composition / Composition
70% Lana / Wool / Laine
25% PA

Peso / Weight / Poids
335 g/m2



Resistenza alla luce / Light fastness / Résistance
à la lumière
6 (UNI EN ISO 105-B02)



Resistenza allo sfregamento / Fastness to rubbing
/ Solidité au frottement
> 100.000 Martindale cycles

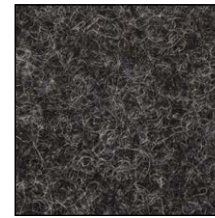


Ignifugità / Fire retardancy / Réaction au feu
EN 1021-1/2 cigarette & match test UK

Manutenzione / Maintenance / Entretien
Aspirare regolarmente, senza spazzolare
/ Vacuum regularly, without rubbing
/ Aspirer régulièrement, sans brosser



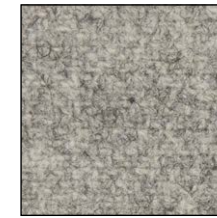
FE 0453



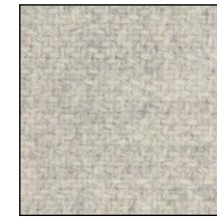
FE 0603



FE 0602



FE 0601



FE 0621



FE 0302



FE 0301



FE 0512



FE 0505



FE 0201



FE 0103



FE 0504



FE 0551



FE 0052

TS3
SL

Tessuto riciclato ignifugo
Fire retardant recycled fabric
Tissu recyclé ignifuge



Composizione / Composition / Composition
100% PES riciclato certificato Seaqual
/ recycled Seaqual certified / recyclé
certifié Seaqual

Peso / Weight / Poids
460 g/m2



Resistenza alla luce / Light fastness / Résistance
à la lumière
6 (UNI EN ISO 105-B02)



Resistenza allo sfregamento / Fastness to rubbing
/ Solidité au frottement
> 100.000 Martindale cycles

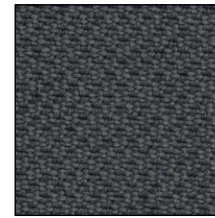


Ignifugità / Fire retardancy / Réaction au feu
CLASSE 1 IT
EN 1021-1/2 cigarette & match test UK

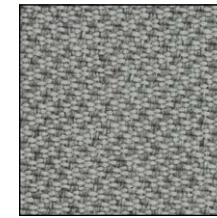
Manutenzione / Maintenance / Entretien
Aspirare regolarmente / Vacuum regularly
/ Aspirer régulièrement



SL 4522



SL 8517



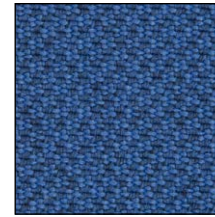
SL 8532



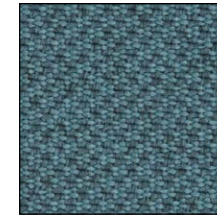
SL 2519



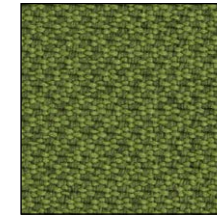
SL 1506



SL 6512



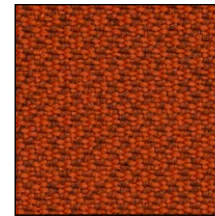
SL 7504



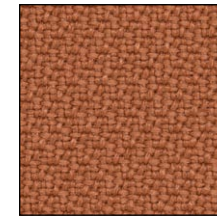
SL 7521



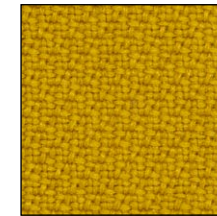
SL 7029



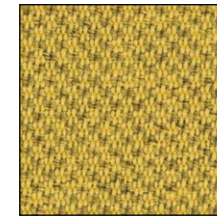
SL 4566



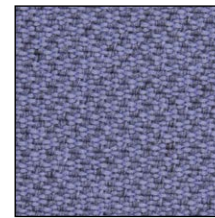
SL 4037



SL 3030



SL 3509



SL 5592

TS3
CS

Tessuto ignifugo
Fire retardant fabric
Tissu ignifuge



Composizione / Composition / Composition
100% PES

Peso / Weight / Poids
570 g/m2



Resistenza alla luce / Light fastness / Résistance
à la lumière
4 (UNI EN ISO 105-B02)



Resistenza allo sfregamento / Fastness to rubbing
/ Solidité au frottement
> 80.000 Martindale cycles



Ignifugità / Fire retardancy / Réaction au feu
EN 1021-1/2 cigarette & match test UK

Manutenzione / Maintenance / Entretien
**Aspirare regolarmente / Vacuum regularly
/ Aspirer régulièrement**



CS 0200



CS 0506



CS 0609



CS 0804



CS 0604



CS 0301

TS3
MA

Finta pelle ignifuga
Fire retardant faux leather
Simili cuir ignifuge



Composizione / Composition / Composition

88% PVC
7% PL
5% CO

Peso / Weight / Poids
715 gr/m2



Resistenza alla luce / Light fastness / Résistance
à la lumière
7 (EN ISO 105 B02)



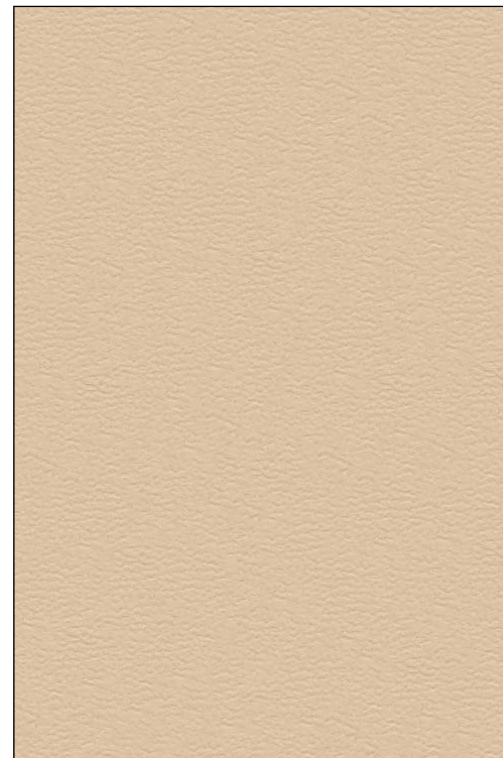
Resistenza allo sfregamento / Fastness to rubbing
/ Solidité au frottement
200.000 cycles Martindale



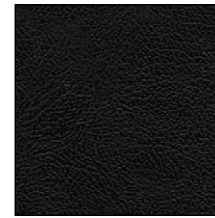
Ignifugità / Fire retardancy / Réaction au feu
CLASSE 1 IT
EN 1021-1/2 cigarette & match test UK

Manutenzione / Maintenance / Entretien

**Usare acqua e saponi neutri, non usare
prodotti chimici / Use mild soap and water,
do not use chemical products / Utiliser
savon neutre et eau, ne pas utiliser
produits chimiques**



MA 0102



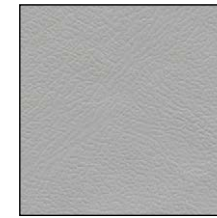
MA 0200



MA 0602



MA 0607



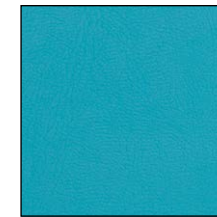
MA 0603



MA 0700



MA 0706



MA 0702



MA 0803



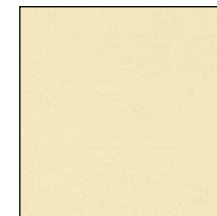
MA 0304



MA 0902



MA 0402



MA 0508



MA 0100

PLUS MX

Tessuto Remix 3 ignifugo
Remix 3 fire retardant fabric
Tissu ignifuge Remix 3



Composizione / Composition / Composition
90% Pura lana vergine / Pure virgin wool
/ Pure laine vierge
10% Nylon

Peso / Weight / Poids
415 gr/m2



Resistenza alla luce / Light fastness / Résistance
à la lumière
5-7 (EN ISO 4892-2/06)

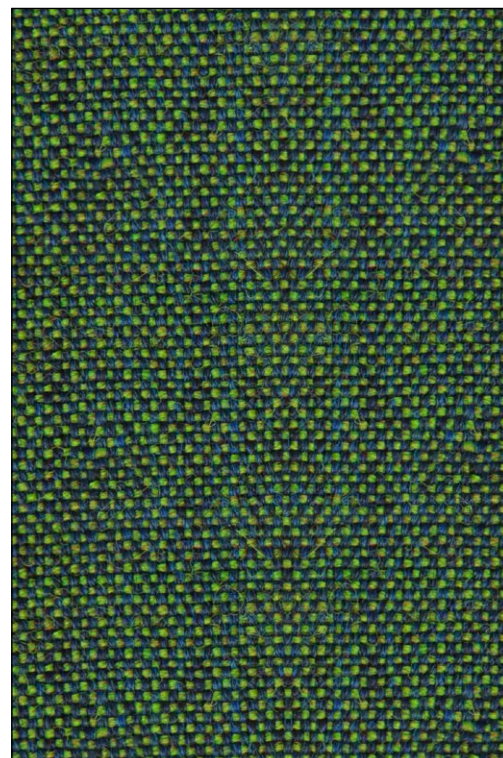


Resistenza allo sfregamento / Fastness to rubbing
/ Solidité au frottement
100.000 Martindale



Ignifugità / Fire retardancy / Réaction au feu
EN 1021-1/2 cigarette & match test UK

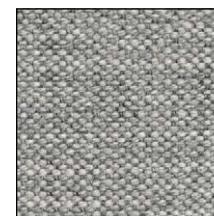
Manutenzione / Maintenance / Entretien
Aspirare regolarmente / Vacuum regularly
/ Aspirer régulièrement



MX 0982



MX 0133



MX 0123



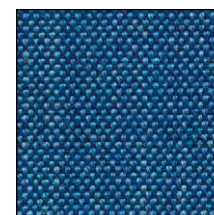
MX 0242



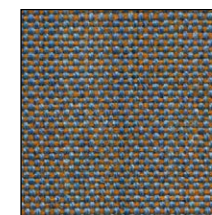
MX 0233



MX 0753



MX 0762



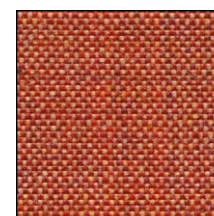
MX 0722



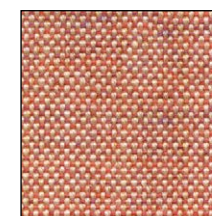
MX 0422



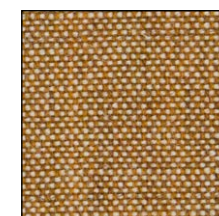
MX 0653



MX 0632



MX 0612



MX 0252



MX 0933

PLUS RI

Tessuto Rime ignifugo
Rime fire retardant fabric
Tissu ignifuge Rime



Composizione / Composition / Composition

**90% Pura lana vergine / Pure virgin wool
/ Pure laine vierge
10% Nylon**

Peso / Weight / Poids

580 gr/m2



Resistenza alla luce / Light fastness / Résistance
à la lumière

5 (EN ISO 4892-2/06)



Resistenza allo sfregamento / Fastness to rubbing
/ Solidité au frottement

100.000 Martindale

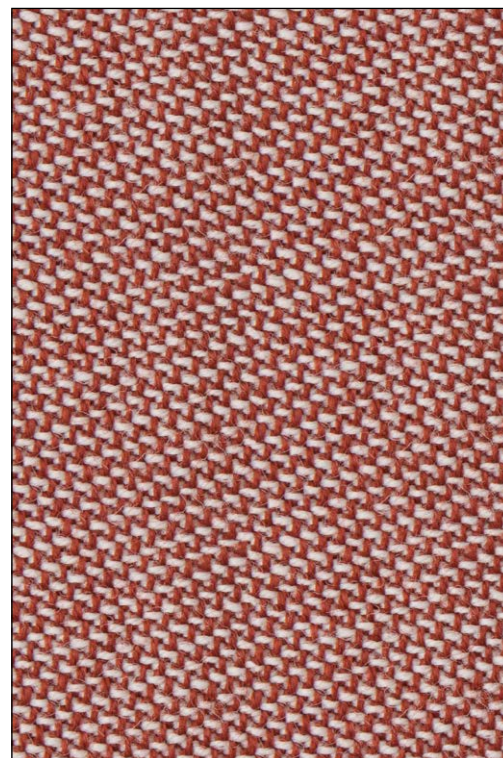


Ignifugità / Fire retardancy / Réaction au feu

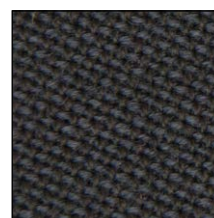
EN 1021-1/2 cigarette & match test UK

Manutenzione / Maintenance / Entretien

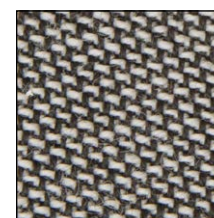
**Aspirare regolarmente / Vacuum regularly
/ Aspirer régulièrement**



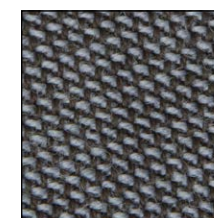
RI 0541



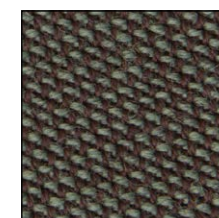
RI 0791



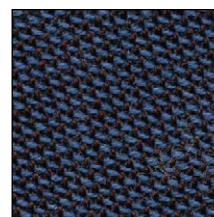
RI 0151



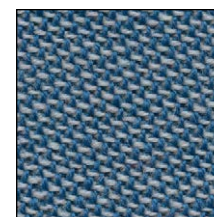
RI 0741



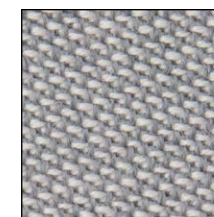
RI 0981



RI 0781



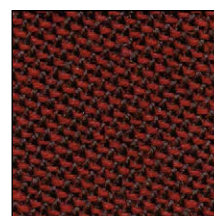
RI 0721



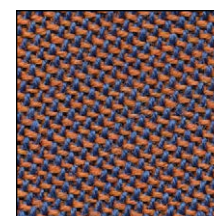
RI 0131



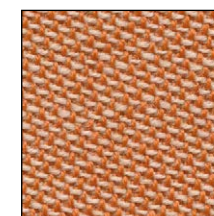
RI 0231



RI 0591



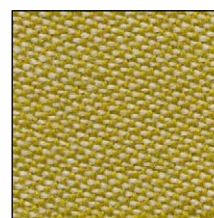
RI 0731



RI 0521



RI 0111



RI 0911

PLUS CZ

Tessuto ignifugo Cortez
Cortez fire retardant fabric
Tissu ignifuge Cortez



Composizione / Composition / Composition

100% PL Trevira CS

Peso / Weight / Poids

620 gr/m2



Resistenza alla luce / Light fastness / Résistance
à la lumière

5 (EN ISO 105 B02)



Resistenza allo sfregamento / Fastness to rubbing
/ Solidité au frottement

80.000 Martindale



Ignifugità / Fire retardancy / Réaction au feu

EN 1021-1/2 cigarette & match test UK

Manutenzione / Maintenance / Entretien

**Usare acqua e saponi neutri, non usare
prodotti chimici / Use mild soap and water,
do not use chemical products / Utiliser
savon neutre et eau, ne pas utiliser
produits chimiques**



CZ 0016



CZ 0010



CZ 0013



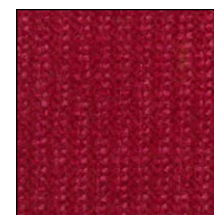
CZ 0012



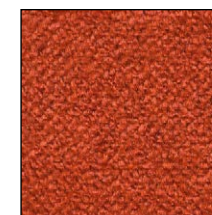
CZ 0011



CZ 0024



CZ 0021



CZ 0020



CZ 0004

LN

Pelle fiore
Full grain leather
Cuir pleine fleur



Composizione / Composition / Composition
Pelle bovina / Bovine leather / Cuir bovin

Spessore / Thickness / Epaisseur
0,90/1,00 mm

Grandezza media / Average size / Dimension
moyenne
4,20 m²



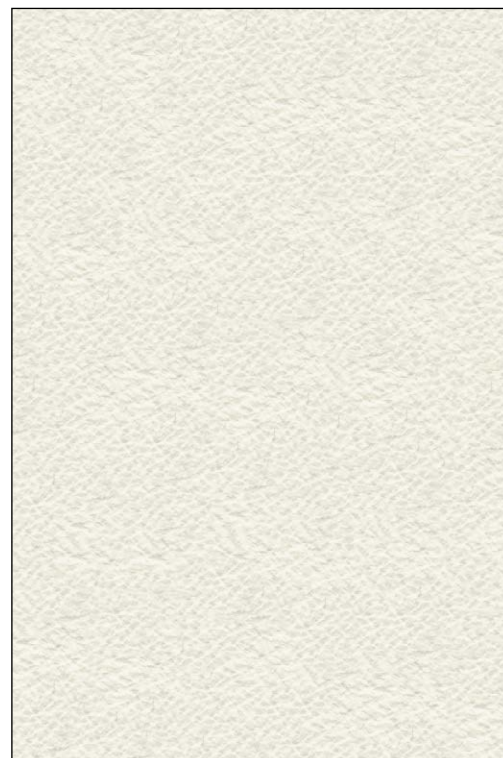
Resistenza alla luce / Light fastness / Résistance
à la lumière
5 (EN ISO 105 B02)



Resistenza allo sfregamento / Fastness to rubbing
/ Solidité au frottement
40.000 Martindale

Manutenzione / Maintenance / Entretien

**Usare acqua e saponi neutri, non usare
prodotti chimici / Use mild soap and water,
do not use chemical products / Utiliser
savon neutre et eau, ne pas utiliser
produits chimiques**



LN 2000



LN 1000



LN 2557



LN 2500



LN 2523



LN 3364



LN 5478



LN 0632



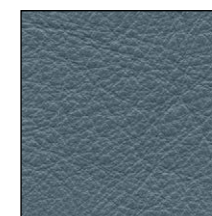
LN 3396



LN 0443



LN 6644



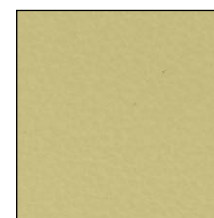
LN 3348



LN 2527



LN 0837



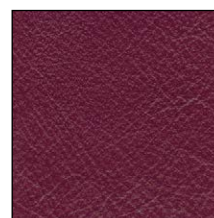
LN 2335



LN 5432



LN 2220



LN 7701



LN 7704



LN 2511



LN 6688



LN 6400

LX

Pelle smerigliata
Corrected grain leather
Cuir rectifié



Composizione / Composition / Composition
Pelle bovina / Bovine leather / Cuir bovin

Spessore / Thickness / Epaisseur
1,00 mm

Grandezza media / Average size / Dimension
moyenne
4,20 m²



Resistenza alla luce / Light fastness / Résistance
à la lumière
3 (EN ISO 105 B02)



Resistenza allo sfregamento / Fastness to rubbing
/ Solidité au frottement
40.000 Martindale

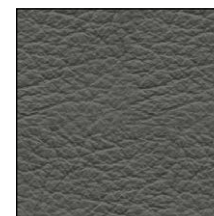
Manutenzione / Maintenance / Entretien
**Usare acqua e saponi neutri, non usare
prodotti chimici / Use mild soap and water,
do not use chemical products / Utiliser
savon neutre et eau, ne pas utiliser
produits chimiques**



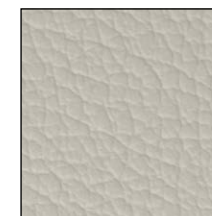
LX 0344



LX 0017



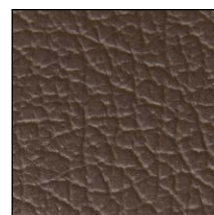
LX 0026



LX 0316



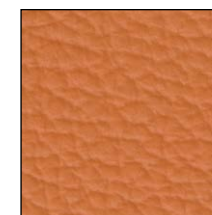
LX 0018



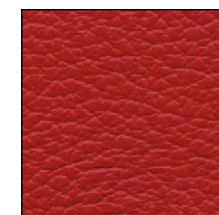
LX 2829



LX 4492



LX 0305



LX 0011



LX 0611



LX 0013

IR

Tessuto riciclato ignifugo
Fire retardant recycled fabric
Tissu recyclé ignifuge



Composizione / Composition / Composition
100% PET riciclato / recycled / recyclé

Peso / Weight / Poids
570 g/m2



Resistenza alla luce / Light fastness / Résistance
à la lumière
7 (UNI EN ISO 105-B02)

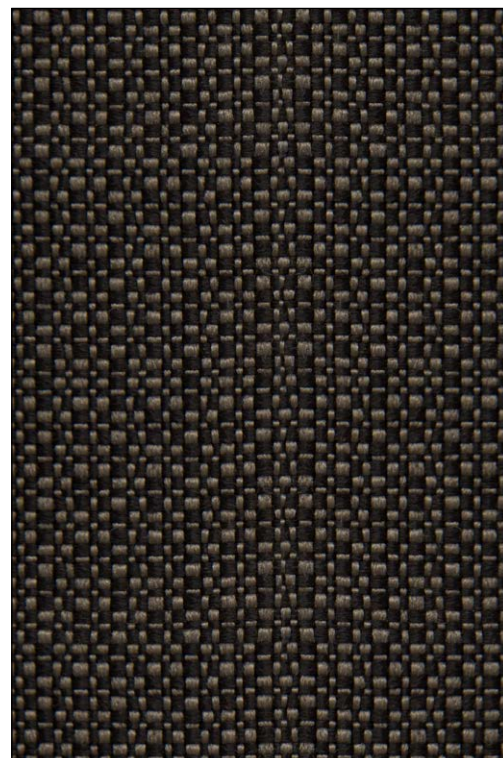


Resistenza allo sfregamento / Fastness to rubbing
/ Solidité au frottement
> 100.000 Martindale cycles



Ignifugità / Fire retardancy / Réaction au feu
EN 1021-1/2 cigarette & match test UK

Manutenzione / Maintenance / Entretien
**Aspirare regolarmente / Vacuum regularly
/ Aspirer régulièrement**



IR 0605



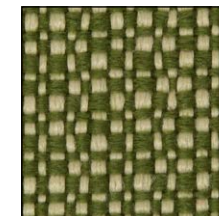
IR 0707



IR 0701



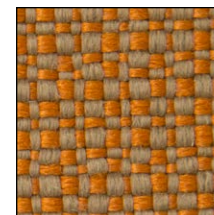
IR 0703



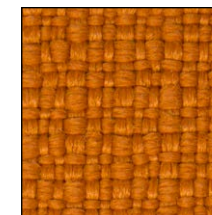
IR 0802



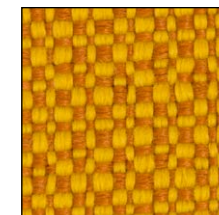
IR 0402



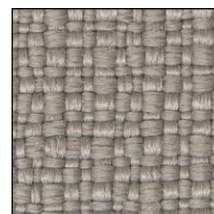
IR 0404



IR 0307



IR 0308



IR 0602



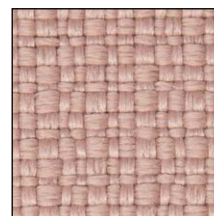
IR 0601



IR 0401



IR 0403



IR 0901

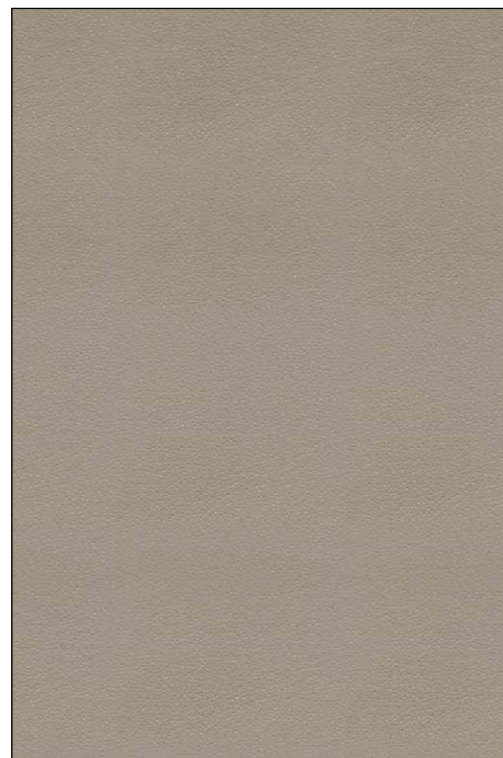
CU

Cuoio rigenerato
Reconstituted bonded leather
Cuir synderme reconstitué



Composizione / Composition / Composition
90% Fibre di cuoio / Leather fibers / Fibres de cuir 10% Lattice naturale / Natural latex / Latex naturel

Manutenzione / Maintenance / Entretien
Usare acqua e saponi neutri, non usare prodotti chimici / Use mild soap and water, do not use chemical products / Utiliser savon neutre et eau, ne pas utiliser produits chimiques



CU 0284



CU 0271



CU 0278



CU 0274



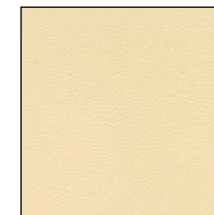
CU 0272



CU 0279



CU 0277



CU 0273



CU 0282

KT

Tessuto autoportante
Supportive fabric
Tissu autoportant



Composizione / Composition / Composition

61% PES
39% PA

Peso / Weight / Poids
480 gr/m²



Resistenza alla luce / Light fastness / Résistance
à la lumière

5 (EN ISO 105 B02)



Resistenza allo sfregamento / Fastness to rubbing
/ Solidité au frottement

>100.000 cycles Martindale



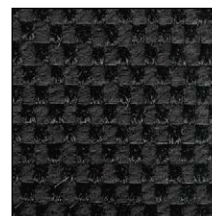
Ignifugità / Fire retardancy / Réaction au feu
EN 1021-1/2 cigarette & match test UK

Manutenzione / Maintenance / Entretien

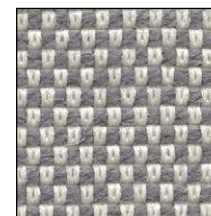
Aspirare regolarmente / Vacuum regularly
/ Aspirer régulièrement



KT 0090



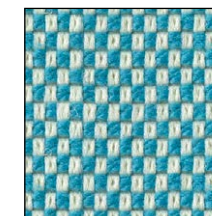
KT 0011



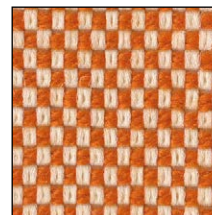
KT 0022



KT 0021



KT 0080



KT 0060

CM

Rete
Mesh
Résille



Composizione / Composition / Composition

61% PES
39% PA

Peso / Weight / Poids
480 gr/m²



Resistenza alla luce / Light fastness / Résistance
à la lumière

5 (EN ISO 105 B02)



Resistenza allo sfregamento / Fastness to rubbing
/ Solidité au frottement

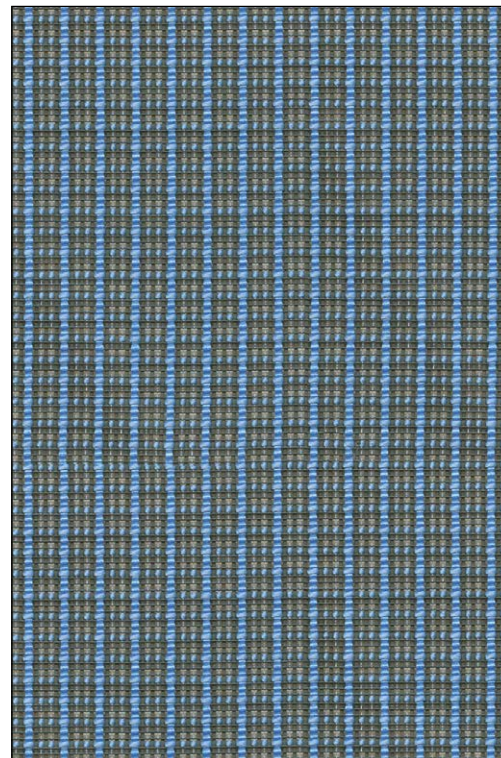
>100.000 cycles Martindale



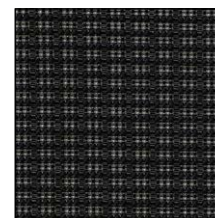
Ignifugità / Fire retardancy / Réaction au feu
EN 1021-1/2 cigarette & match test UK

Manutenzione / Maintenance / Entretien

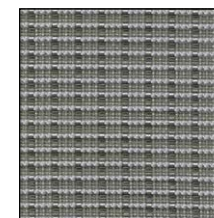
Aspirare regolarmente / Vacuum regularly
/ Aspirer régulièrement



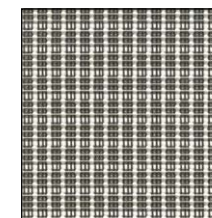
CM 0700



CM 0900



CM 0800



CM 0600

RT

Rete
Mesh
Résilie



Composizione / Composition / Composition

70% PVC
30% PES

Peso / Weight / Poids
560 gr/m²



Resistenza alla luce / Light fastness / Résistance
à la lumière
8 (EN ISO 4892-2/06)



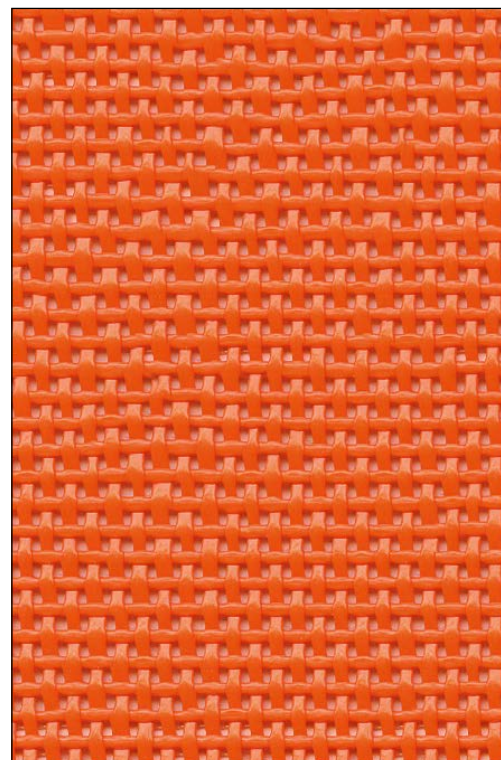
Resistenza allo sfregamento / Fastness to rubbing
/ Solidité au frottement
100.000 cycles Martindale



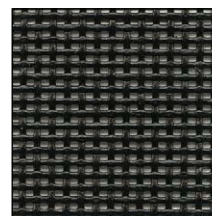
Ignifugità / Fire retardancy / Réaction au feu
Su richiesta / On demand / Sur demande

Manutenzione / Maintenance / Entretien

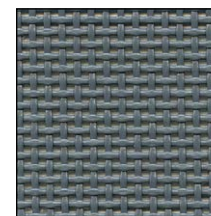
**Usare acqua e saponi neutri, non usare
prodotti chimici / Use mild soap and water,
do not use chemical products / Utiliser
savon neutre et eau, ne pas utiliser produits
chimiques**



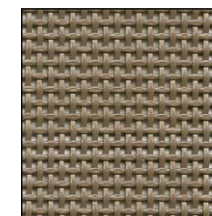
RT 0025



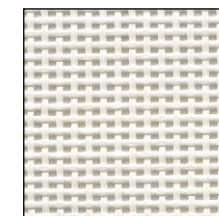
RT 0015



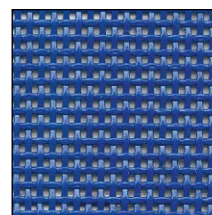
RT 0024



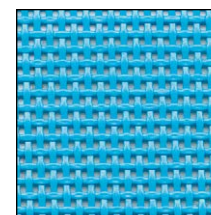
RT 0022



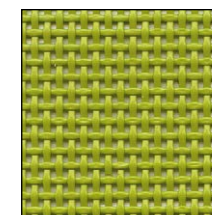
RT 0014



RT 0021



RT 0020



RT 0023

GO

Rete
Mesh
Résilie



Composizione / Composition / Composition

55% PL
45% PA

Peso / Weight / Poids
280 gr/m²



Resistenza alla luce / Light fastness / Résistance
à la lumière

6 (EN ISO 105 B02)



Resistenza allo sfregamento / Fastness to rubbing
/ Solidité au frottement

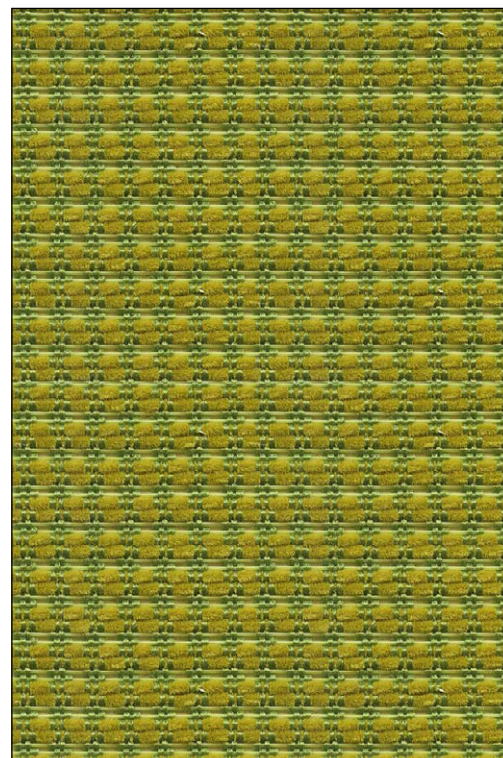
100.000 cycles Martindale



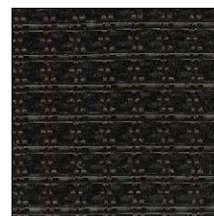
Ignifugità / Fire retardancy / Réaction au feu
EN 1021-1/2 cigarette & match test UK

Manutenzione / Maintenance / Entretien

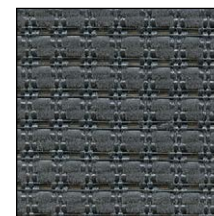
Aspirare regolarmente / Vacuum regularly
/ Aspirer régulièrement



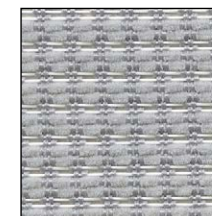
GO 0041



GO 0033



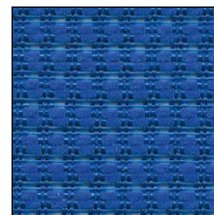
GO 0089



GO 0043



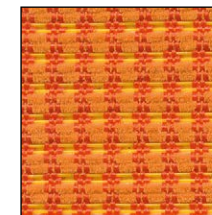
GO 0001



GO 0015



GO 0008



GO 0029

PXV

Plastica Voilà
Voilà plastic
Plastique Voilà

Composizione / Composition / Composition
100% Polipropilene *



PXV 034



PXV 031



PXV 032



PXV 033

PXW

Plastica Wendy
Wendy plastic
Plastique Wendy

Composizione / Composition / Composition
100% Polipropilene *



PXW 041



PXW 045



PXW 048



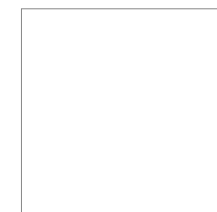
PXW 043



PXW 042



PXW 044



PXW 046

PXR

Plastica Role
Role plastic
Plastique Role

Composizione / Composition / Composition
100% Polipropilene *



PXR 072



PXR 050



PXR 062



PXR 020



PXR 030



PXR 035

* Per plastiche ignifughe: consultare il servizio commerciale per quotazioni. / For fire retardant plastics: please contact our sales department for quotes. / Pour plastiques version ignifugé: contactez notre service commercial pour les tarifs.

PXC

Plastica Clark/Lois
Clark/Lois plastic
Plastique Clark/Lois

Monoscocca / Shell / Coque

Composizione / Composition / Composition
100% Polipropilene *

Bottone / Button / Bouton

Composizione / Composition / Composition
100% Polipropilene *

Sottosedile / Under seat / Sous assise

Composizione / Composition / Composition
100% Polipropilene *

PXD

Plastica Dolly
Dolly plastic
Plastique Dolly

Composizione / Composition / Composition
100% Polipropilene *



PXC 070



PXC 040



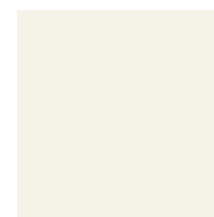
PXC 035



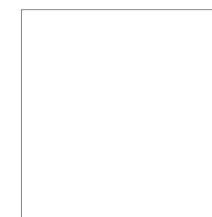
PXC 052



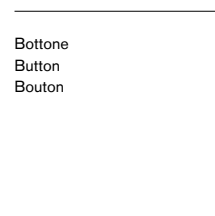
PXC 081



PXC 011



PXC 010



Bottone
Button
Bouton



B070



B053



B010



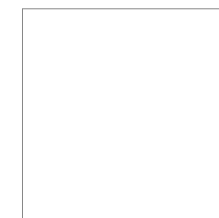
Sottosedile
Under seat
Sous assise



S070



S071



S010



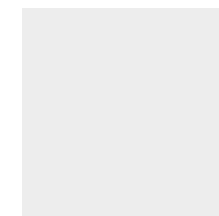
PXD 090



PXD 070



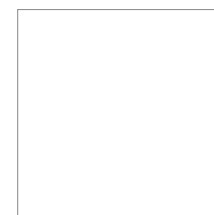
PXD 051



PXD 071



PXD 031



PXD 011

* Per plastiche ignifughe: consultare il servizio commerciale per quotazioni. / For fire retardant plastics: please contact our sales department for quotes. / Pour plastiques version ignifugé: contactez notre service commercial pour les tarifs.

MILANI

Milani S.r.l

**Sede legale/showroom:
via delle Industrie II, 5/7
30020 - Meolo VE**

**Sede operativa/uffici
via Giorgione, 21
31056 - Roncade TV**

**T. +39 0422 1860501
F. +39 0422 1860599
info@sm-milani.com
www.sm-milani.com**